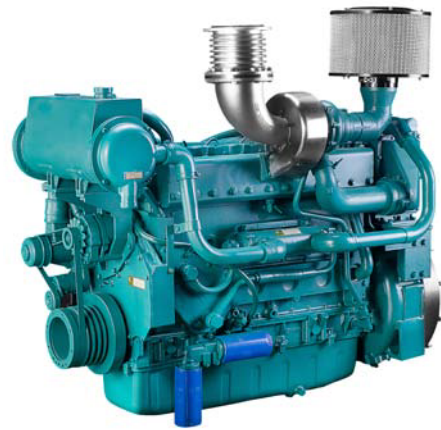


## Marine Auxiliary Engine- WP12 Series

### General Specifications

Bore & Stroke	126x155 mm
Displacement	11.6 L
Cylinder Number	6
Compression Ratio	17:1
Fuel System	Mechanical Pump
Governor Method	Mechanic/Electronic
Aspiration	TA
Emission Standard	IMO Tier II



Engine Speed	Engine Output		Typical Generator Output
	Prime(PRP)	Standby(ESP)	
RPM	kW	kW	kWe/kVA
1500	288	317	250/313

Engine Speed	Engine Output		Typical Generator Output
	Prime(PRP)	Standby(ESP)	
RPM	kW	kW	kWe/kVA
1800	288	317	250/313

### Standard Equipments

#### Engine and block

- Cast iron frame style body structure
- One-piece forged crankshaft
- Separate cast iron cylinder heads and dry liners
- Split-cap forged steel connecting rods
- Aluminium alloy pistons with gallery oil cooling

#### Cooling system

- Fresh / raw water heat exchanger with integrated thermostatic valves and expansion tank
- Cast iron centrifugal fresh water pump, mechanically driven
- Self-priming raw water pump, mechanically driven

#### Lubrication system

- Full flow duplex type oil filters replaceable engine running
- Fresh water cooled lube oil cooler plate type

#### Fuel system

- P-type in-line injection pump or common-rail
- Dual-skinned fuel pipe with alarm and leakage collector
- Duplex fuel filters replaceable engine running
- Water separator

#### Intake air and exhaust system

- Washable air filter & exhaust expansion joint
- Insulated dry type or water jacket exhaust manifold

#### Electrical system

- 24V electric starter motor and battery charging alternator
- Voyage safeguard monitor and 5m harness

#### Flywheel and housing

- SAE1 flywheel housing and SAE 11.5 size flywheel

#### Certification

- CCS and IAPPC

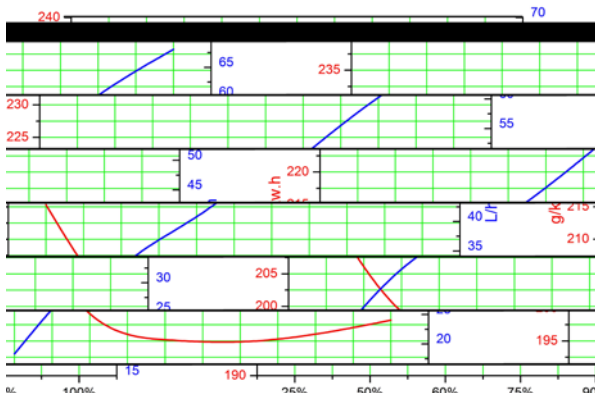
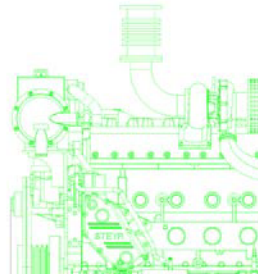
### Optional Equipments

- Remote controlling monitor
- Manual drawing off oil pump
- Tool Kits

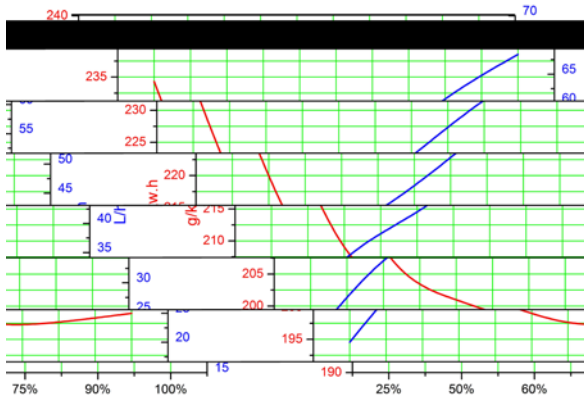
	Continuous Power(COP)	Prime Power(PRP)	Standby Power(ESP)
Mean engine load factor	100%	≤70% per 250 h	≤80% per 24 h
Annual working time	Unlimited	Unlimited	≤200 h
Time at full load	Unlimited(Max. load 0.85PRP)	≤500 h per year	≤25 h per year
Overload capacity	No	1 h per 12 h(10% overload)	No

## Dimensions and Weight

Length	1497 mm
Width	846 mm
Height	1424 mm
Weight	1100 kg



WP12CD317E200-288kW/1500rpm



WP12CD317E201-288kW/1800rpm

### Power definition

Standard ISO 3046/1 -1995(F)

### Reference conditions

Ambient temperature	25 °C
Barometric pressure	100 kPa
Relative humidity	30%
Raw water temperature	25 °C

### Fuel oil

Relative density	0,840 ± 0,005
Lower calorific power	42 700 kJ/kg
Consumption tolerances	0 ± 5 %

### Lube oil

Recommend grade	CD 15W/40
-----------------	-----------

Distributed By:

Manufacturer: Weichai Power Co., Ltd  
 Address: 197 A, Fushou East Street, High-Tech  
 Development Zone, Weifang, China  
[www.weichai.com](http://www.weichai.com)

